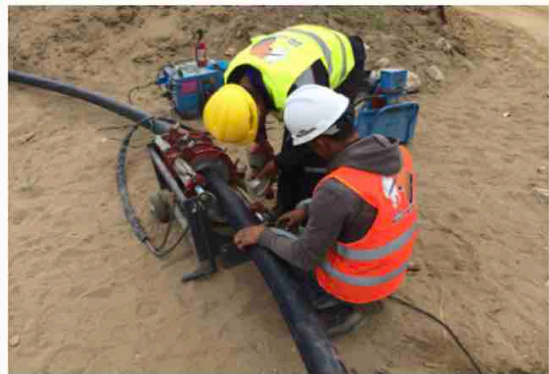


GROUP AH-HKTP

SARL AFRIC HANDASSA & SARL HKTP



• Offices HASSI MESSAOUD :
Cité 1850 LOGTS locale souici said, Hassi Messaoud

• Base HASSI MESSAOUD :
Industrial zone, HASSI MESSAOUD



• Base BBK:
Next to the Power Plant of BBK

CONSTRUCTION & CIVIL ENGINEERING



SCAN ME

✉ : group-ah-hktp@africhandassa.com

☎ : +213 559 42 88 81 / 00213 661 87 53 06
FAX : 00213 24 94 13 00



www.africhandassa.com



About Our Group

AH & HKTP have created this alliance by pooling their skills, know-how, human and material resources to achieve maximum efficiency.

Our Group supports its partners in their oil business all over Algeria. We set our know-how in a desert environment to achieve projects of national and international contractors. We are capable of tackling even the greatest industry challenges on **various civil works, excavations and roadworks, oil infrastructures (CPF, compressor station ...), and living quarters.**

In line with this management, we develop a culture of a **quality service**, proximity and responsiveness. Our Group is surrounded by technical profiles and privileged partners to answer all the requests of its customers

To become the key partner of major projects in Algeria, our group is constantly improving its performances, expanding its range of skills and projects. Also offering innovative and **environmentally respectful** techniques helping you to achieve your objectives.



**YOUR SATISFACTION
IS OUR ONLY AMBITION**



OUR MAIN CUSTOMERS:



SONATRACH

• And subsidiaries



**DODSAL Engineering
and Construction**



NAFTAL

• And subsidiaries



**GRUPEMENT
SONATRACH - AGIP**



SONELGAZ

• And subsidiaries



Various national and
international
compagnies

ORGANIZATIONAL CHART

GROUP AH & HKTP



BORD OF DIRECTORS

Mr BENDJAEL &
Mr HAROUZ

Group Assistant

Mme ARABI Nadia
+213 661 82 75 18

Projects Manager

Mr Yasser BENAICHA

Enginner Manager

Mr Badreddine SAFOU

H&R Director

Ms Nadia ARABI

Financial Director

Mr Arezki HAMLADJI

Marketing Director

Mr Sofiane SIDANE

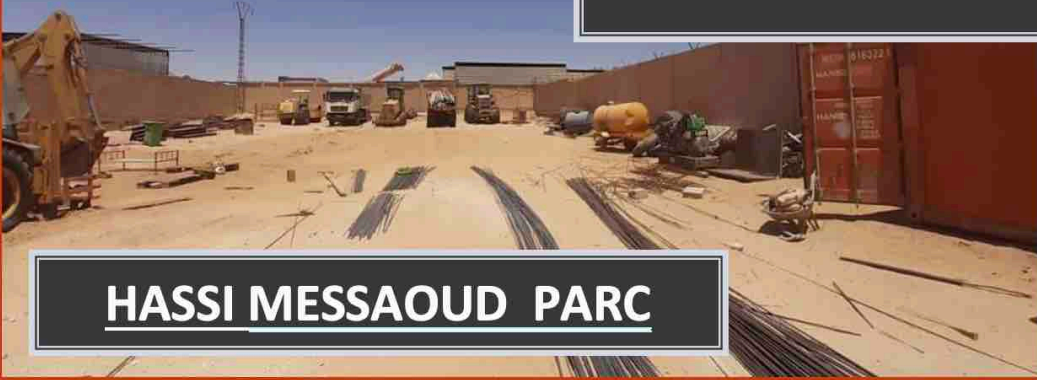
Purchasing & Equipment Manager

Mr Redouane KENDIL

Supervisors,
Workers and Safety

Various Engineers
(structural, estimator and
planning) and quality
controlers

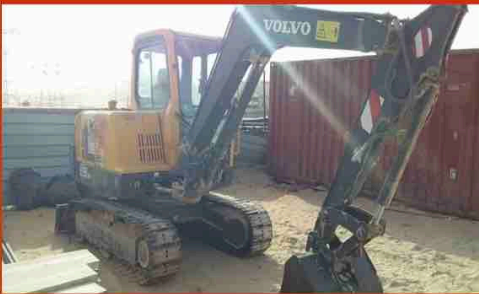
AN OVERVIEW OF OUR HEAVY EQUIPMENT & VEHICLES



HASSI MESSAOUD PARC



ALGIERS PARC



CURRENT PROJECTS

Construction of a (turnkey) living security quarters at BIR BERKINE (next to BBK's power plant)



- Client: **SONATRACH DP HMD**
- Area: 12 000 m²
- Duration: 18 months
- Amount: 350 000 000 DZD

SUBSTATION Civil Works and cable trench works for CIS Plant (inside area) in site Brownfield HASSI MESSAOUD



- Client: **DODSAL**
- Area: various
- Duration: 12 months
- Amount: 120 000 000 DZD



AND MORE...

WELL DONE PROJECTS

2019: Various Civil Works for SONATRACH hassi messaoud's petroleum sites (CINA, CIS, 24F...)



- Client: **SONATRACH DP HMD**
- Area: various sites
- Duration: 18 months
- Amount: 300 000 000 DZD



Our interventions

Protection of the environment in the frame of sustainable development in Alignment with the law of:

03-10 DE19 JULY 2003

BRN JANUARY 2017

2018: Evacuation of contamination sand to a controlled dump at BRN



- Client: **SONATRACH-AGIP**
- Field: 84 000 CUM
- Duration: 08 months
- Amount: 106 000 000 DZD

A PERFORMANCE Achieving customer satisfaction

LABORATORY

Environmental Technical Assistance Program, Technical support, External control and Quality Product Mission

A dedicated team of engineers and technicians that develops economical and efficient solutions to meet the limitation of the impact of our activities on the environment.

EQUIPEMENT AND RENTAL

Equipment renting, Transport of materials, Repair and maintenance workshop, Management of an equipment fleet

A service that guarantees the availability of a large equipment park and equipment on site in compliance with the legislation in force with respect of the environment.

COMMERCIAL SERVICE AND STUDIES

AH-HKTP has a team dedicated to win leading markets and expand the AH-HKTP offering by supporting customers in innovative techniques and processes. The objective is to focus in the means to be proactive to align the client's expectations to the offers.

MATERIALS

Gravel Gypsum Cold asphalt.

By offering our customers a wide ranges of products available in the desert



QSE POLICY



Convinced that the strength of a company depends on a rigorous organization and a high quality of its products and services, AH-HKTP is strongly committed to a respectful approach of environment and safety. Its QSE policy is indeed one of the major drivers of its strategy. It aspires to the satisfaction of its clients, the preservation of the natural environment, the health and safety of the staff based on the following objectives:

QUALITY

Ensure a sustainable quality of the works as a company dedicated to satisfy the orders of our customers, our activities are closely related to matters of quality, responsibility and reliability. The Group has to improve the satisfaction of the stakeholders, whether customers or collaborators.

SECURITY

Aiming for a high level of security Prioritizing occupational hazards, consulting, raising awareness and training staff on safety instructions are extremely important to ensure the smooth running of work on site in a responsible way with respect to the environment, health and safety.

ENVIRONMENT

Working for a sustainable future, AH-HKTP has been involved for several years in an ecological approach and is constantly renewing its commitments. It is the whole of the work accomplished, from the production to the realization through the management of the raw materials and the reprocessing of the waste, which is rewarded. The company's environmental policy is based on two main areas: preserving natural resources by limiting energy consumption as well as atmospheric emissions and by upgrading materials and designing innovative and environmentally friendly techniques.



PERSONAL SAFETY EQUIPMENT



Restoration of polluted sites



Our interventions

Contrat N° : S16P055 CUSTOMER:
SONATRACH-AGIP GROUP
Project: Evacuation of contaminated sand to a controlled dump
at BRN fields.
An amount of 84 000 m3 was evacuated.